



# Tomahawk's Students

# Agenda

**Review Input and Group Ratings**

**Frame in Relation to District Goals**

**Create space for discussion and planning for next steps**

**THANK YOU**

**7 Mindsets=30.4**  
**Leader is Me=28.2**  
**Character Strong= 23**



**7 Mindsets=30.4**  
**Leader is Me=28.2**  
**~~Character Strong= 23~~**





# **Update of Review Scores: 5/11/2023**

**7 Mindsets = 29.25  
Leader in Me 26.2**

Welcome to Your **Positivity Project 14-Day Trial** External Inbox x



**Elizabeth MacWilliams** <elizabeth.macwilliams@posproject.org>  
to me ▾

May 3, 2023, 10:32AM (1 day ago)



**Positive** character education in just 15 minutes a day.

Email not displaying correctly?  
[View it in your browser.](#)

Hi Thersea,

Welcome to The **Positivity Project's** 14-day **trial!** We are thrilled to have the chance to work with you and your school! Within the next 1-2 business days, we will have you set up with full **trial** access to P2 resources. In the meantime, here is some additional information on who we are, what we do, and how we do it.



### What Is The **Positivity Project**?

The **Positivity Project** (P2) is a **Positive** Character Education curriculum dedicated to empowering

The Positivity Project is the program that was put forth by the concerned members. There are several documents on the website with specific information on how it aligns to CASEL.

- <https://posproject.org/blog-p2-alignment-casel/>
- <https://drive.google.com/file/d/1PYIWQ93UL53hFZ4nPXhR-nAO61F5EGUV/view>
- <https://docs.google.com/spreadsheets/d/1SOaFIdKvW1KNEUIccZFMPClyIrs-9QZUQXV445--0HA/edit#gid=0>

P2 also highly recommend taking a character survey (data collection) through VIA website. This is directly from their FAQ page.:

The Positivity Project is not affiliated with the VIA Institute. However, we do strongly encourage teachers to take the VIA Character Strengths Survey as part of their introduction to The Positivity Project. That's because the survey, initially developed by Dr. Chris Peterson, helps teachers internalize the character strengths vocabulary and concepts.

The VIA has two different surveys, one for adults and one for children (age 10-17). It is up to schools whether or not their teachers or students take the VIA Character Strengths Survey. You can find both surveys [here](#).

If your students are under age 13 or if you do not want students to provide their email address, you can set up a Teacher Site [here](#).

If you dig into the research documents on the Positivity Project Website, they also talk about DEI and several of the sources used in the article specifically relate to DEI Below is a link to the article. The specific info on Diversity is near the end of the article. If you use ctrl f and type in the word equity, it will take you right to that section.

[https://drive.google.com/file/d/1LLDfbh92fEFAjWJXt30FFGiBUQOKJgZ\\_/view](https://drive.google.com/file/d/1LLDfbh92fEFAjWJXt30FFGiBUQOKJgZ_/view)



## Vision

Empowering all students to be socially responsible,  
life-long learners in an ever changing world.

## Mission

The School District of Tomahawk will become the school district of choice  
known for its high levels of student achievement,  
the excellence of its programs, and its sound stewardship.

<b>Teaching, Learning, &amp; Relevance</b>	<b>The Whole Student</b>	<b>Communication &amp; Community Engagement</b>	<b>District Workforce</b>	<b>Operational Excellence</b>
Adaptive and focused pathways for student growth.	Acknowledgment of the balance of student needs for social emotional development.	Engaging our parents and community stakeholders through excellence in communication.	To attract, retain, and support district staff.	Providing quality facilities and budgeting to support student, staff, and community success.



# Redefining Ready Wisconsin:



# National Indicators:



## **National College and Career Readiness Indicators**

# **What Employers Want In An Employee:**

[Greenbay Gazette](#)

[Indeed](#)

[Military.com](#)

# How does SEL connect to other building goals?

Tomahawk Elementary  
Tomahawk Middle School  
Tomahawk High School



## Hard Skills

Teachable abilities or skill sets that are easy to quantify.

vs.

## Soft Skills

Also known as "people skills" or "interpersonal skills."

你好吗?

Proficiency in a foreign language



A degree or certificate



Typing speed



Machine operation



Computer programming



Communication



Flexibility



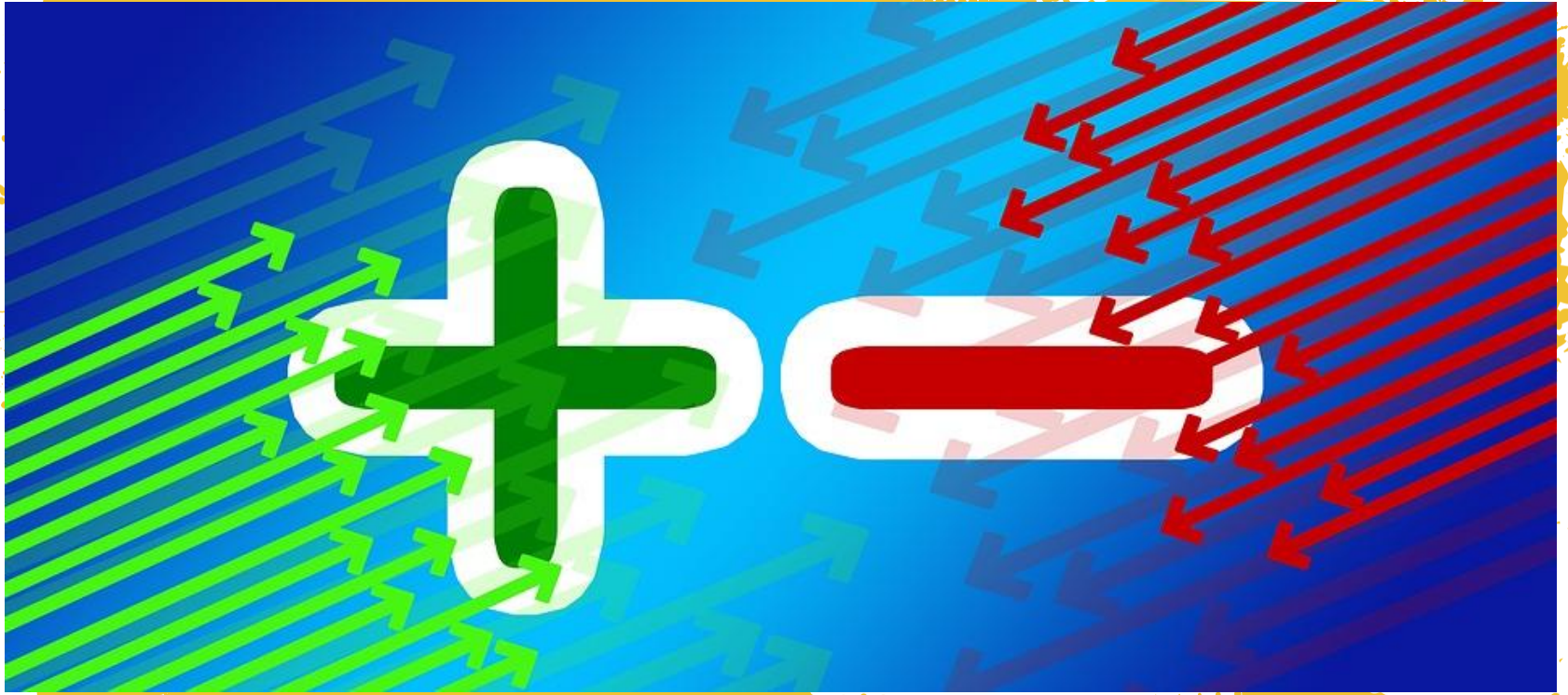
Leadership



Teamwork



Time Management

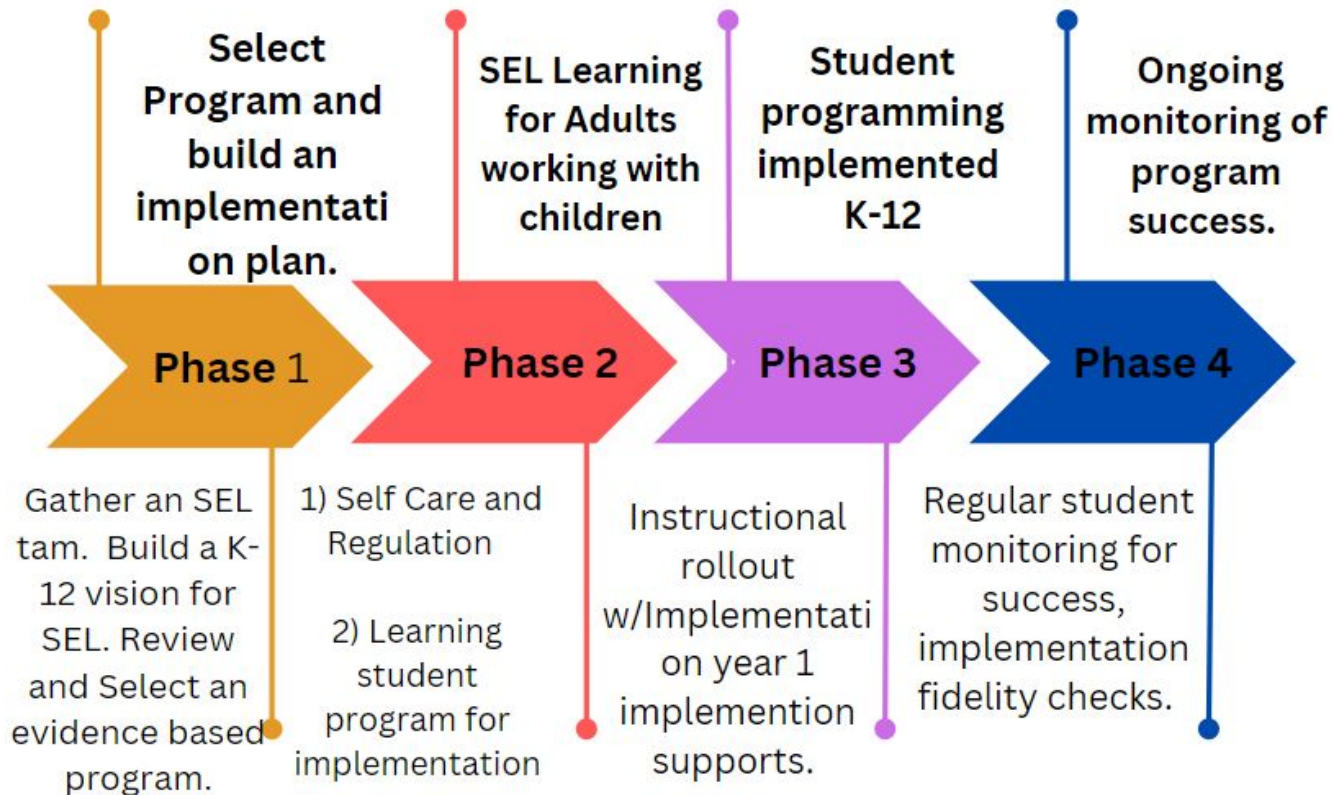




<http://www.csh.org/wp-content/uploads/2018/07/38-National-Partner-Recommendation-Consensus-Decision-Making-Process-incl-Modified-Consensus.pdf>

<https://selwisconsin.wisc.edu/wp-content/uploads/sites/1173/2019/11/PK-12-Student-Screener-Questions.pdf>

# Social Emotional Learning Curriculum Plan



# Listening Session May 11th @ 5:30

KEY POINTS From the work

- Maslow's Hierarchy of needs
- Not new teaching, but review of materials- current programing was primarily in Elem and MS
- Initial committee and community based committee
- SEL has been hijacked by broader social agendas National vs Local goals for SEL
- Each meeting overview including the internal - in depth discussions of what we WANT and What we DON'T
- Without core curriculum needs will be addressed randomly (liability, inconsistency, lack of tiers of support)



THANK  
YOU

